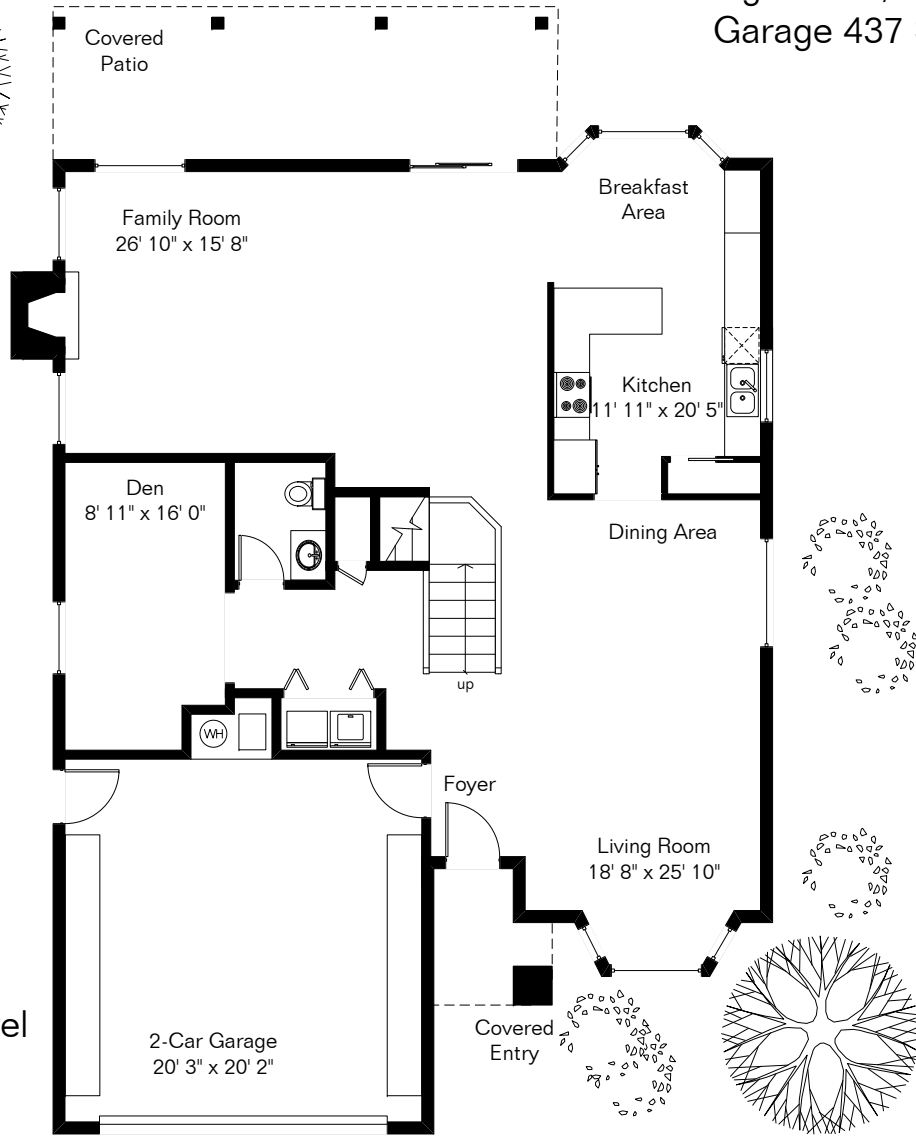
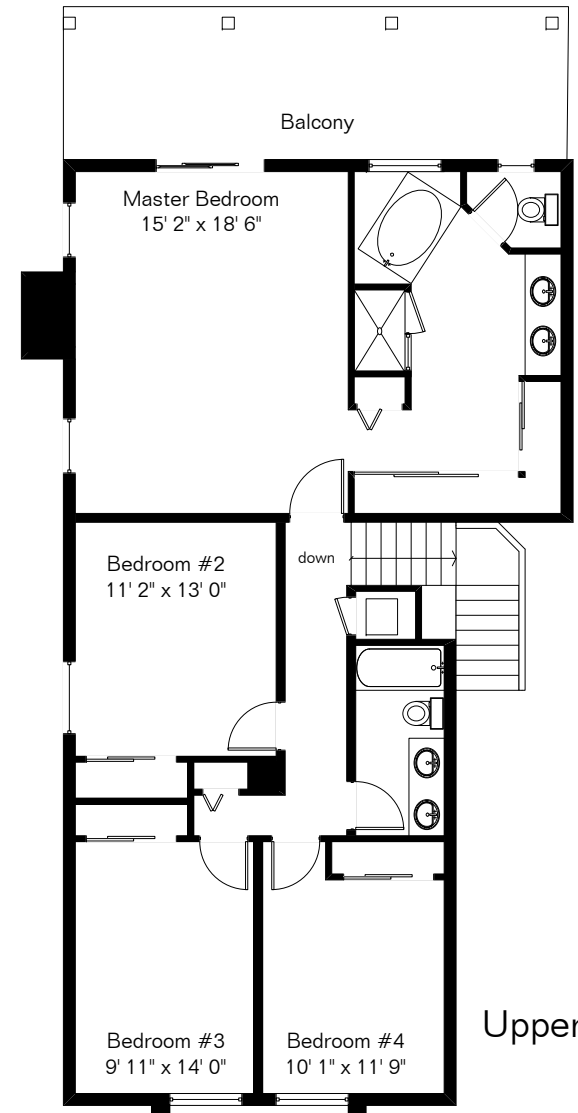


Living Area 2,848 Sq Ft
Garage 437 Sq Ft



Lower Level



Upper Level

The square footages and room size information are deemed to be reliable but are not guaranteed and should be independently verified.

Site Visit August 2006

0 ft. 6 ft. 10 ft. 20 ft.



10309 N Mineral Spring Lane

Presented by Patti Mallen

Long Realty Comapny

(520) 548-5237

www.FloorPlansFirst.com

Copyright 2007 Floor Plans First! LLC
All Rights Reserved.

Toll Free (877) 887-1500
Voice (520) 881-1500
Fax (520) 791-7701

