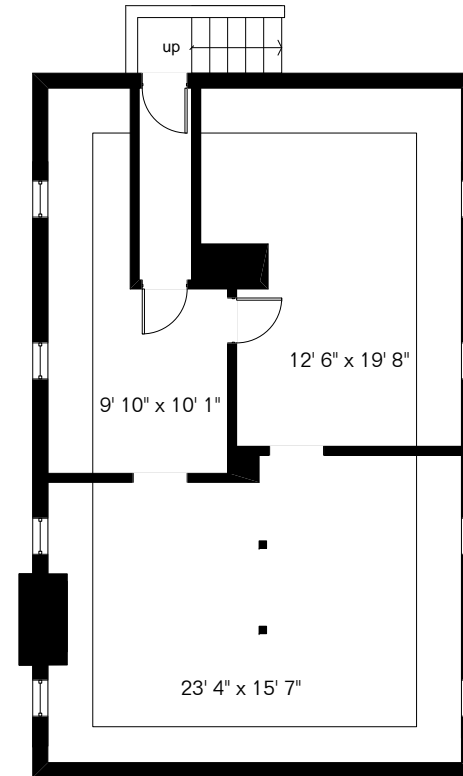
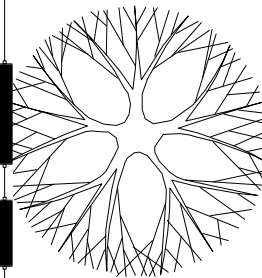
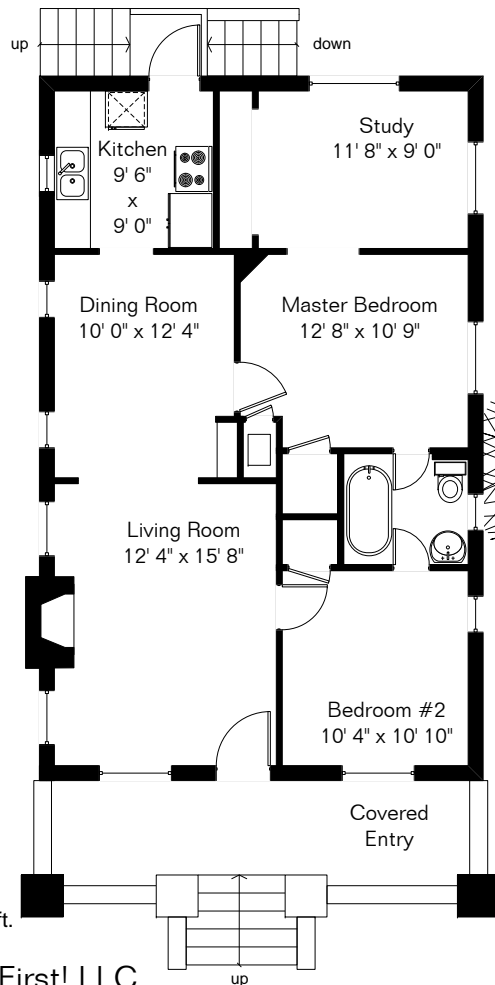


1242 N Euclid Ave

Presented by Joan Caruso
Executive Sales Associate
Williams Centre Office
Coldwell Banker Residential Brokerage
(520) 745-4545

The square footages and room size information are deemed to be reliable but are not guaranteed and should be independently verified.



Basement

Living Area 966 Sq Ft
Basement 966 Sq Ft
Garage/Laundry 336 Sq Ft



Site Visit October 2009

0 ft. 6 ft. 10 ft. 20 ft.

Copyright 2008 Floor Plans First! LLC
All Rights Reserved.

www.FloorPlansFirst.com

Toll Free (877) 887-1500
Voice (520) 881-1500
Fax (520) 791-7701

