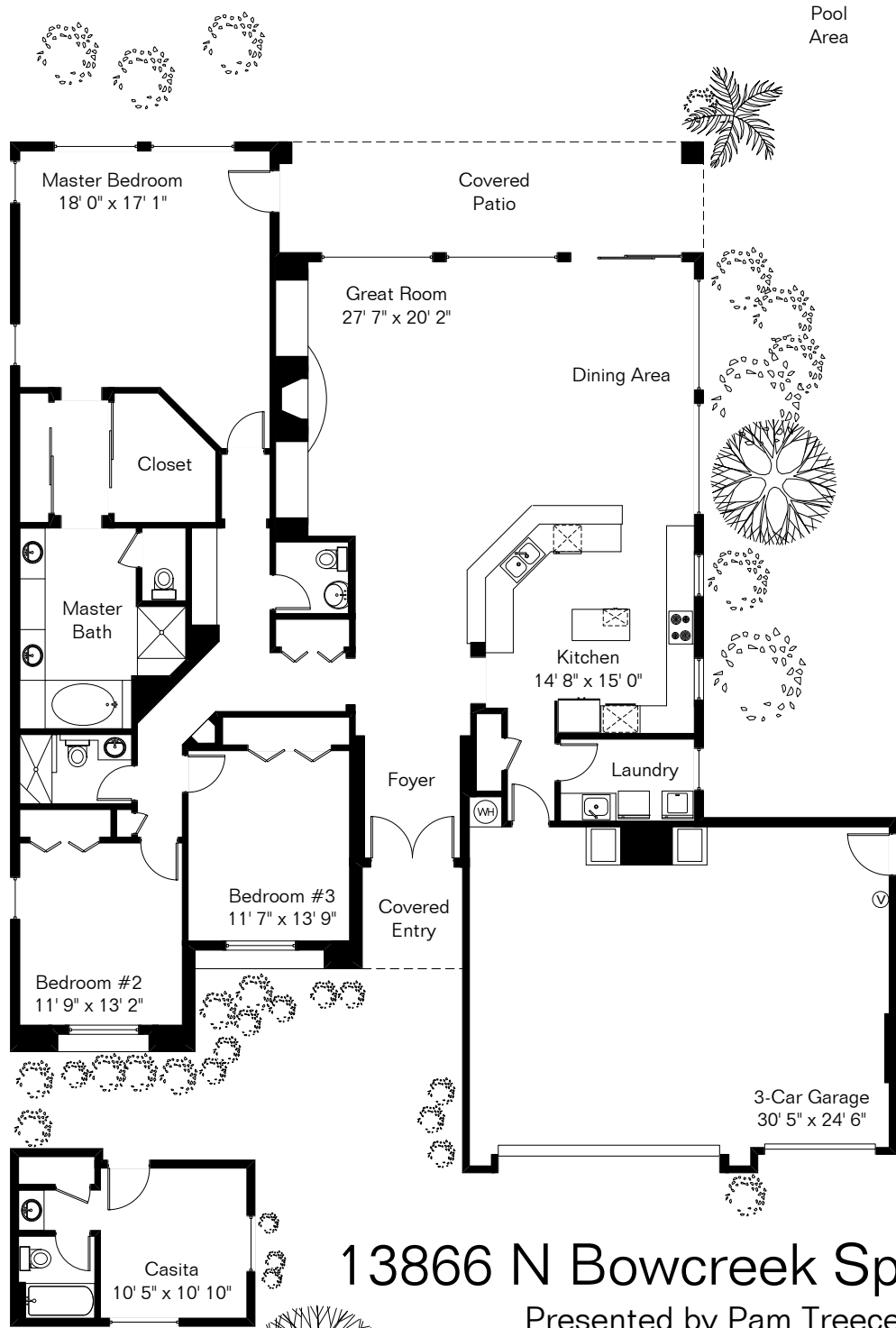


Main House 2,581 Sq Ft
 Casita 218 Sq Ft
 Total Living Area 2,799 Sq Ft
 Garage 773 Sq Ft

The square footages and room size information are deemed to be reliable but are not guaranteed and should be independently verified.



13866 N Bowcreek Springs Pl

Presented by Pam Treece
 Long Realty Company
 (520) 275-2664

Site Visit July 2009

0 ft. 6 ft. 10 ft. 20 ft.



Copyright 2009 Floor Plans First! LLC
 All Rights Reserved.

www.FloorPlansFirst.com

Toll Free (877) 887-1500
 Voice (520) 881-1500
 Fax (520) 791-7701

