

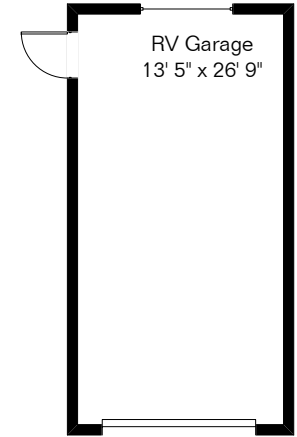
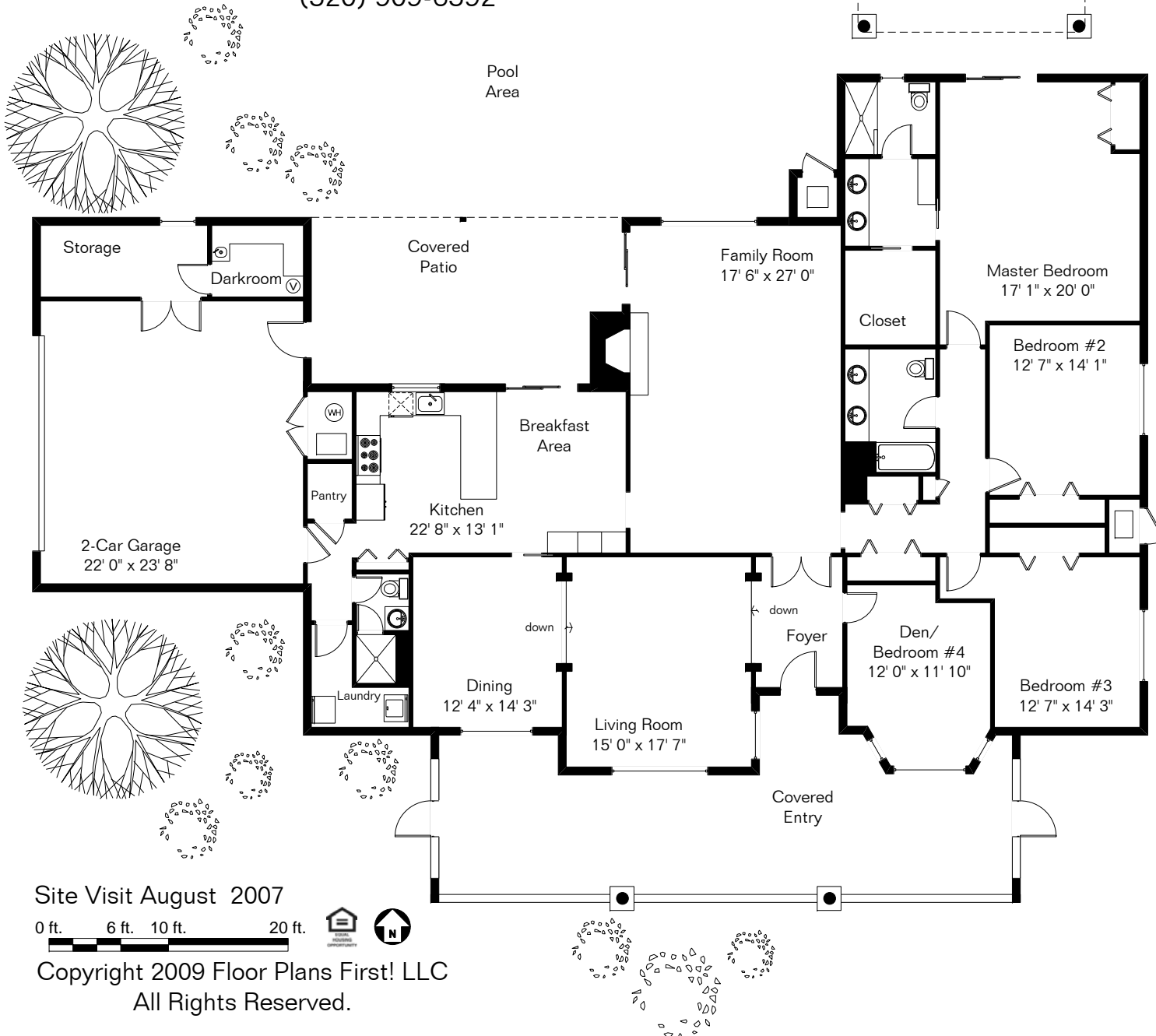
2229 E Cerrada Bala

Presented by Denice Osbourne

Long Realty Company

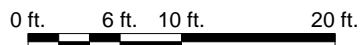
(520) 909-6592

The square footages and room size information are deemed to be reliable but are not guaranteed and should be independently verified.



Living Area 3,026 Sq Ft
 Garage 745 Sq Ft
 RV Garage 414 Sq Ft

Site Visit August 2007



Copyright 2009 Floor Plans First! LLC
 All Rights Reserved.

www.FloorPlansFirst.com

Toll Free (877) 887-1500
 Voice (520) 881-1500
 Fax (520) 791-7701

