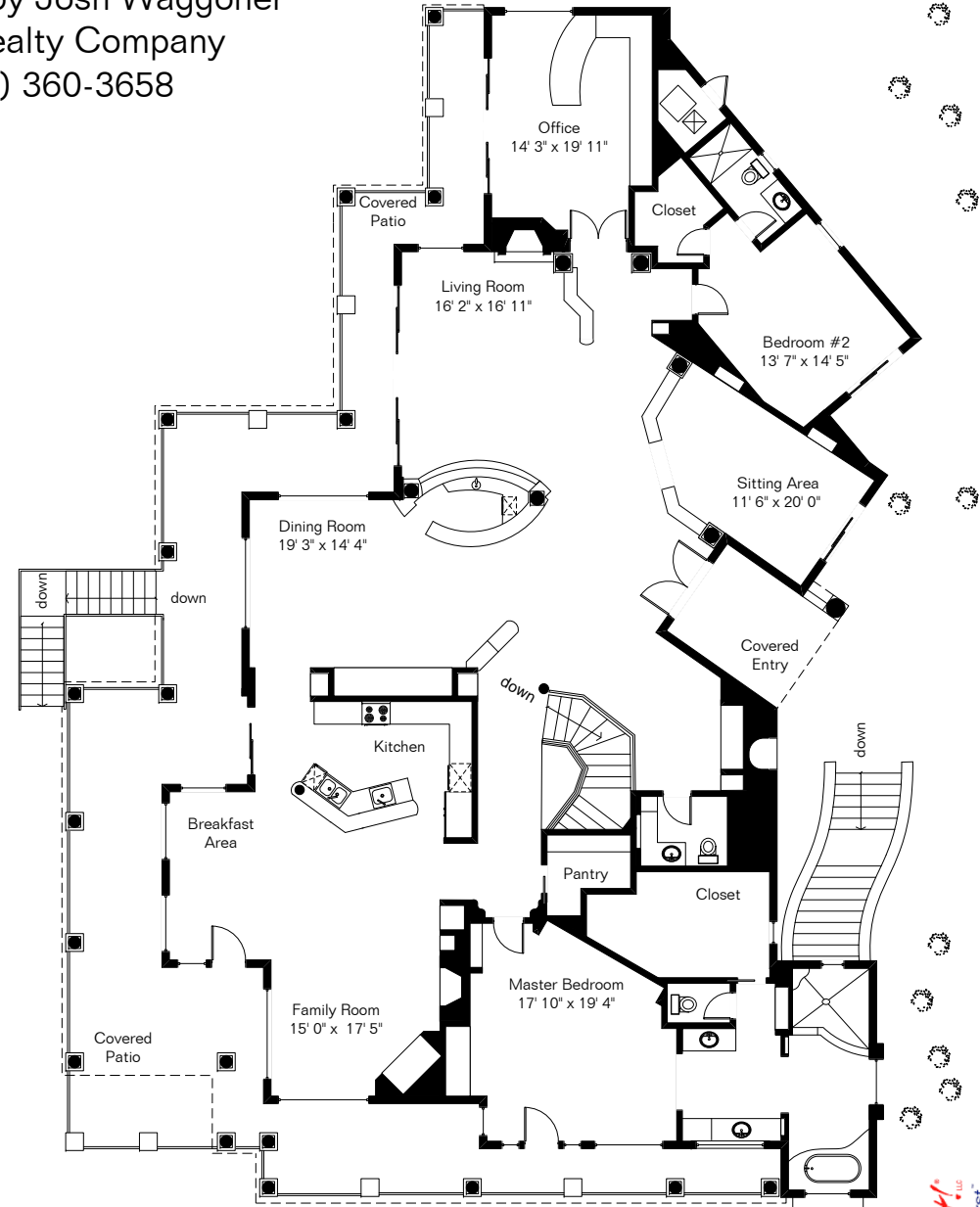
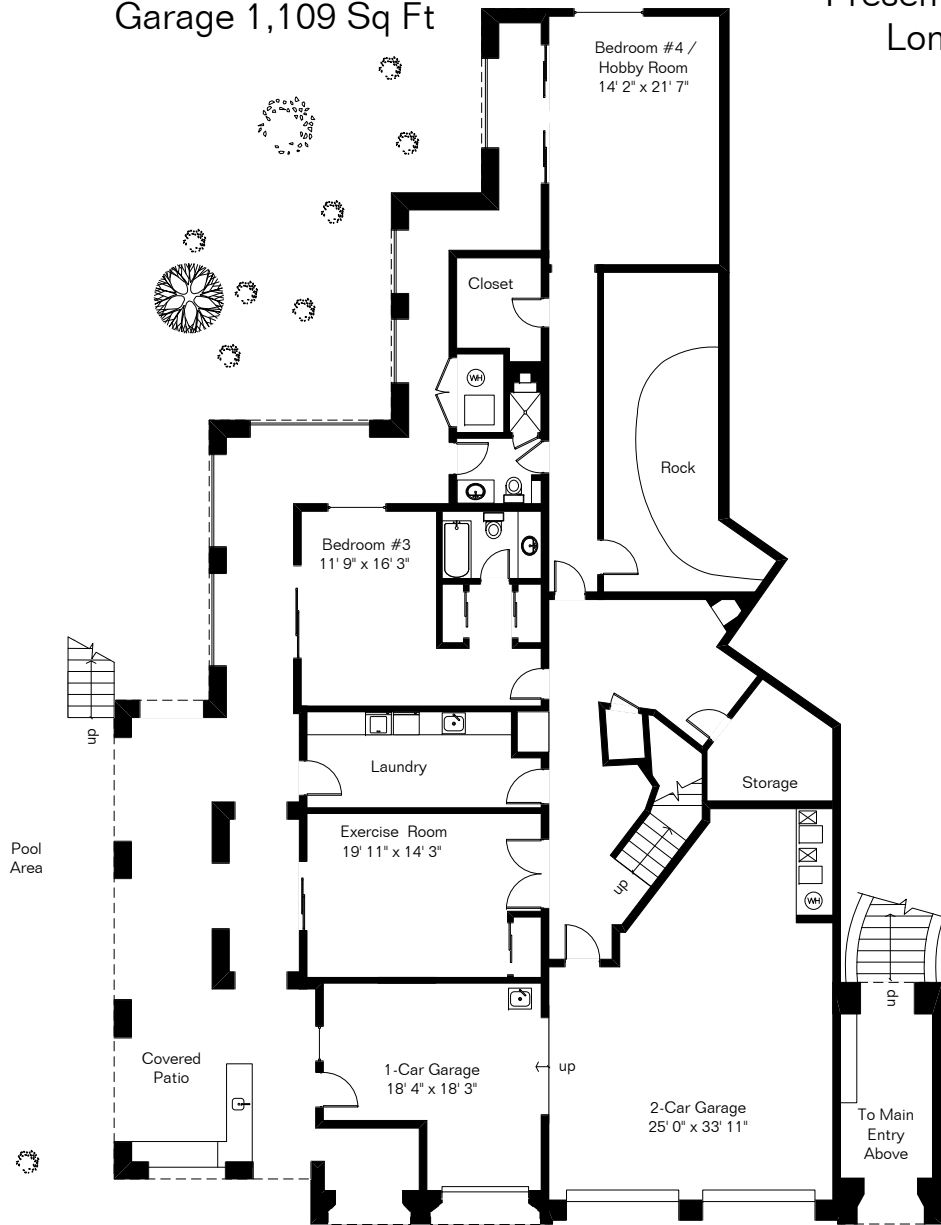


Living Area 6,410 Sq Ft
 Covered Patios 2,848 Sq Ft
 Garage 1,109 Sq Ft

6755 N Hole In The Wall Way

Presented by Josh Waggoner
 Long Realty Company
 (520) 360-3658



January 2004

0 ft. 6 ft. 10 ft. 20 ft.



Copyright 2007 Floor Plans First! LLC
 All Rights Reserved.

The square footages and room size information are deemed to be reliable but are not guaranteed and should be independently verified.

www.FloorPlansFirst.com

Toll Free (877) 887-1500
 Voice (520) 881-1500
 Fax (520) 791-7701

Floor Plans First!
 See the Floor Plan First