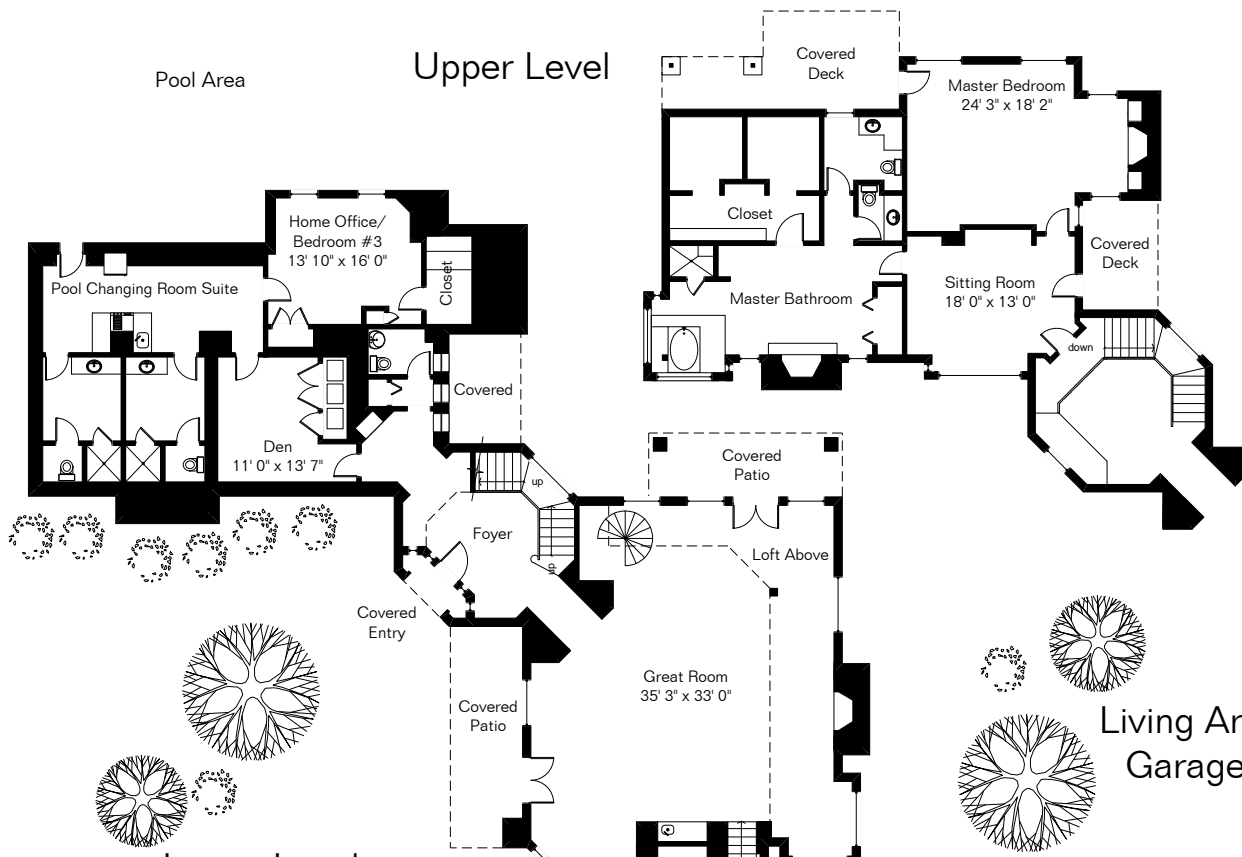


Pool Area

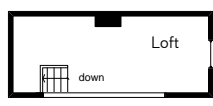
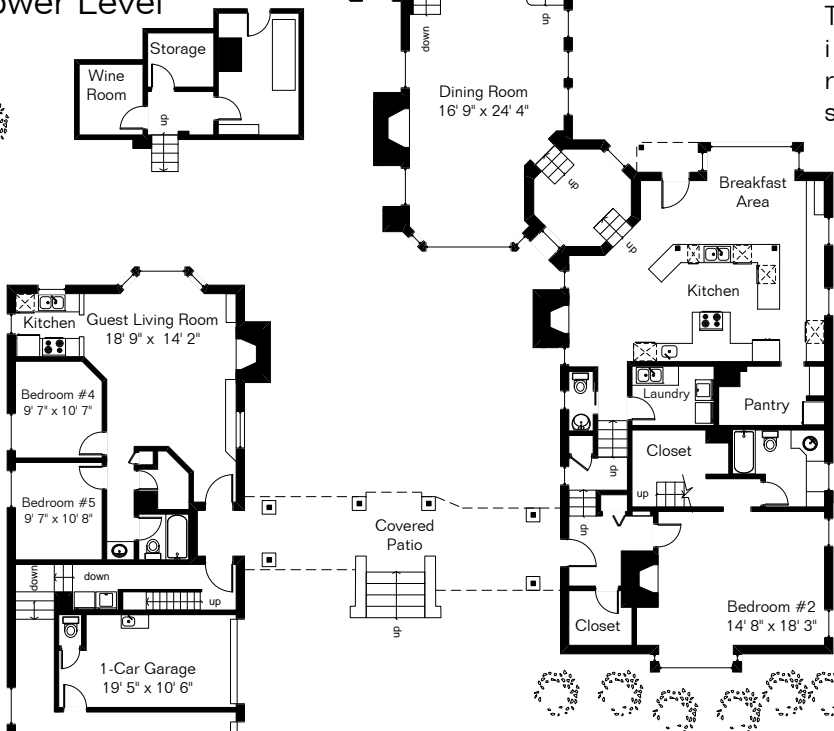
### Upper Level



Living Area 9,270 Sq Ft  
Garage 1,100 Sq Ft

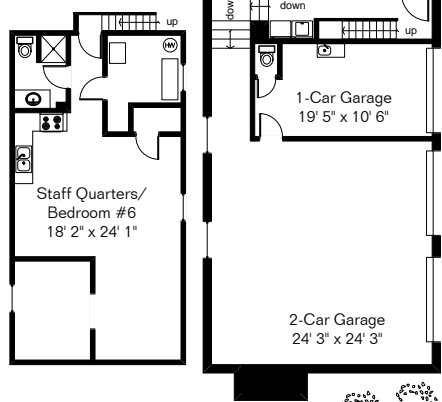
The square footages and room size information are deemed to be reliable but are not guaranteed and should be independently verified.

### Lower Level



### Upper Level

### Upper Level



# 7049 N Mission Hill Lane

Presented by Russell & Christine Long

Long Realty Company

(520) 529-1116

Site Visit February 2006

0 ft. 6 ft. 10 ft. 20 ft.



Copyright 2008 Floor Plans First! LLC  
All Rights Reserved.

[www.FloorPlansFirst.com](http://www.FloorPlansFirst.com)

Toll Free (877) 887-1500  
Voice (520) 881-1500  
Fax (520) 791-7701

