

The square footages and room size information are deemed to be reliable but are not guaranteed and should be independently verified. This drawing is for marketing purposes only.

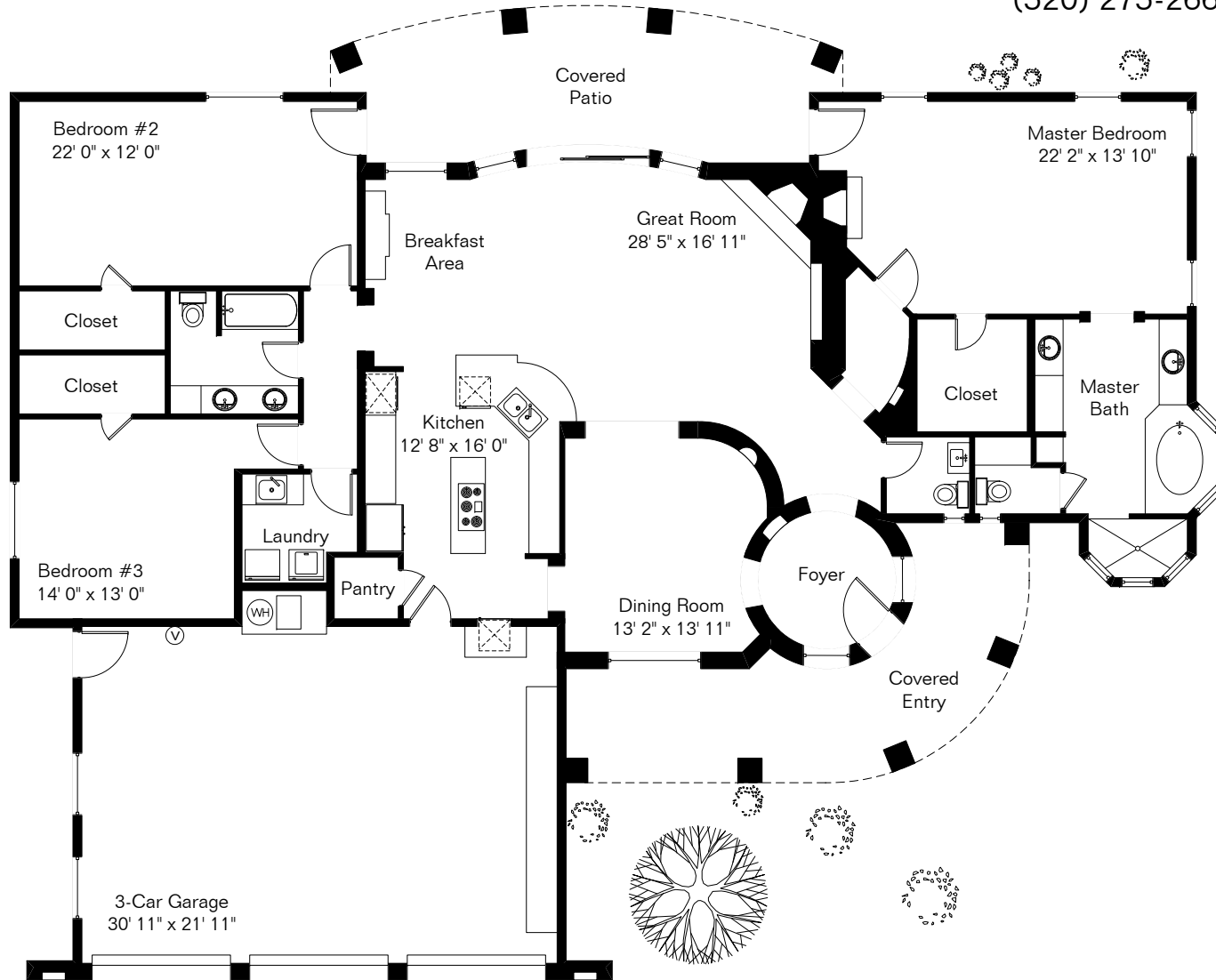
Pool & Spa Area

61 E Morning Ridge Pl

Presented by Pam Treece

Long Realty Company

(520) 275-2664



Site Visit January 2020

0 ft. 6 ft. 10 ft. 20 ft.



Copyright 2020 Floor Plans First! LLC
All Rights Reserved.

Living Area 2,517 Sq Ft
Garage 749 Sq Ft

www.FloorPlansFirst.com

Toll Free (877) 887-1500
Voice (520) 881-1500

Floor Plans First!
See the Floor Plan First!